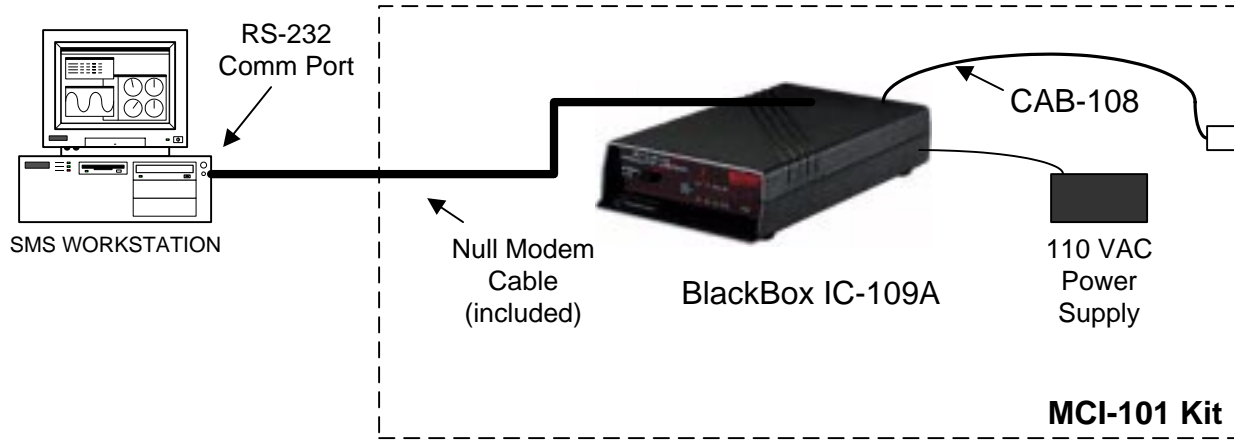
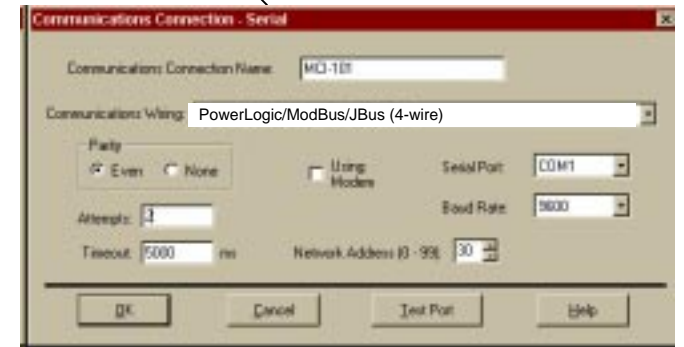
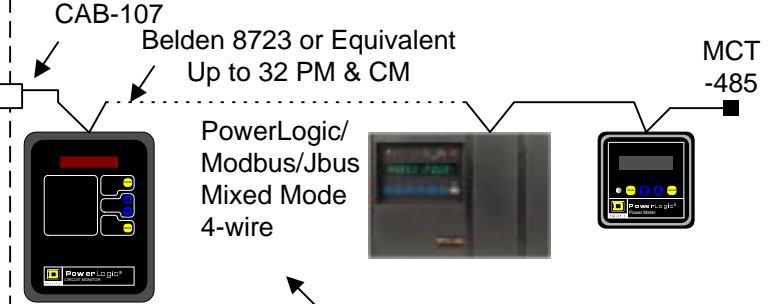


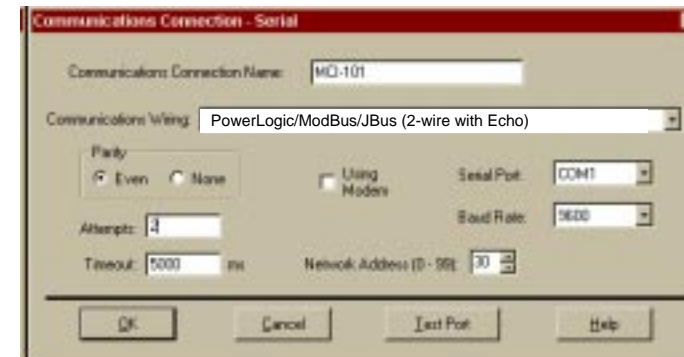
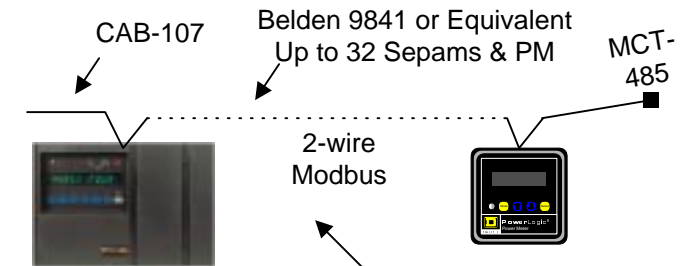
## Serial Connection MCI-101



## Device compatibility



Search for Sepam, Modbus or MCI-101 in PowerLogic Knowledge Base for detailed wiring & configuration



MAXIMUM DAISYCHAIN DISTANCES		
BAUD RATE	1 - 16 DEVICES	17 - 32 DEVICES
1200	3,050 m (10,000 FT.)	3,050 m (10,000 FT.)
2400	3,050 m (10,000 FT.)	1,525 m (5,000 FT.)
4800	3,050 m (10,000 FT.)	1,525 m (5,000 FT.)
9600	3,050 m (10,000 FT.)	<b>1,220 m (4,000 FT.)</b>
19200	<b>3,050 m (10,000 FT.)</b>	762.5 m (2,500 FT.)

## Bill of Materials (Typical)

Catalog #	Part Description
	Computer/s
	SMS/PMX Software
	Belden Cable as needed
	Metering Devices
3090MCI101	Multipoint Communications Interface (RS232/RS485 Converter)
3090CAB107	Interconnect Cable - 10 Ft. 9 Pin Differential with Loopbacks to Spade Lugs
3090MCT485 or 3090MCTAS485	Multipoint Communications Terminator for Circuit Monitors or AS for PowerLink/Power Meters